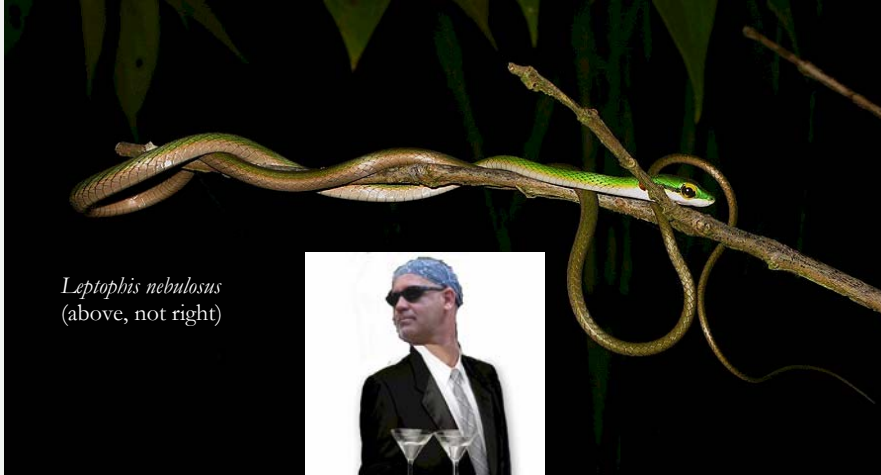


Another Faculty Workshop



Leptophis nebulosus
(above, not right)

At the beginning of June 2009, a small group of liberal-arts faculty representing, Denison, Rhodes, Pitzer, and Scripps Colleges visited the Firestone Center with funding from the Andrew W. Mellon



Foundation. The group was once again led by Keith Christenson, and Warren Roberts the Claremont Colleges' GIS specialist. The group

was introduced to principles of magnetic and GPS surveying, and had the opportunity to work with our summer undergraduate students in setting up their various research projects.

The Globos-Locos Arrive

During June and July 2009, Professor Milton Machuca, brought a group of eight Pitzer students (six first-year students working closely with two class of 2009 graduates) to the FCRE to conduct research in the surrounding communities. The fieldwork

was the global component of a Pitzer Global/Local paired course. This summer, work involved the intensive study of the 22 communities between La Alfombra and Dominical. The project aimed to gather as much cultural information as possible to serve as a

baseline for the assessment of land and water use and issues. The "Globos Locos," as they were affectionately nicknamed, provided a valuable workforce for building McFarlane's famous bat roost and assisting the biological research students. .

SPECIAL POINTS OF INTEREST:

- ◆ A new FCRE publication, on our mapping project, has been published.
- ◆ Pitzer's Global-Local project comes to the FCRE
- ◆ An artificial bat roost has been constructed at the top of the Reserve.



INSIDE THIS ISSUE:

<i>Critter gallery</i>	2
<i>Carol moves on</i>	3
<i>The bat tower</i>	3
<i>Mapping</i>	4

Glass frog (*Hyalinobatrachium valerioi*)

CRITTER
GALLERY

A SELECTION OF THE
BEST NATURAL
HISTORY
PHOTOGRAPHY FROM
THE RESERVE



Hyla microcephala

*Photos by Keith
Christenson, June
2009*



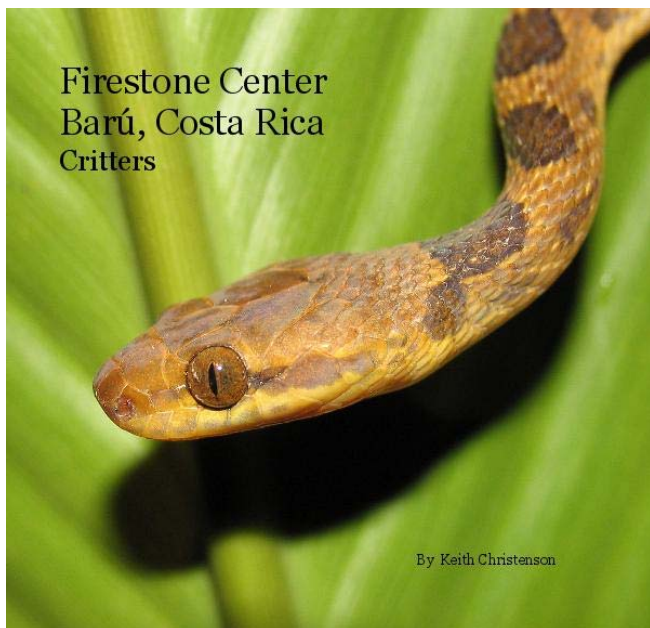
An FCRE Friend Moves On

Carol Brandt, who has been the prime-mover of all things FCRE from day one, has moved on from her position as Director of Overseas programs at Pitzer. She has been appointed to a senior position at NYU's new campus in Abu Dhabi, and replaced at Pitzer by Michael (Mick O') Ballagh. Carol will be sorely missed by everyone involved with the FCRE, but we will endeavor to bring her back to visit (and work!) in future summers.

The geology of the FCRE denies us, and the FCRE bats, the joys of natural caves. In June 2009, much sweat equity was put into the construction of a stone tower that, we hope, will serve as a bat roost.

Carol and the
Bat Tower

The Bat Tower



Firestone Center
Barú, Costa Rica
Critters

By Keith Christenson

You still have the opportunity to purchase Keith Christenson's excellent photo guide to Firestone animals, available mail-order from:

<http://www.blurb.com/bookstore/detail/558964>

US Address:
Firestone Center
c/o Office of
International
Programs,
Pitzer College
Claremont CA
91711

Contact:
michael_ballagh
@pitzer.edu

*Ignorance more
frequently begets
confidence than
does knowledge: it
is those who know
little, and not those
who know much,
who so positively
assert that this or
that problem will
never be solved by
science.*

Charles Darwin



Publications

Beginning in our first summer of operations at the FCRE, Keith Christenson and Donald McFarlane have organized and trained groups of students in mapping and, over 5 years, have developed a detailed set of spatial data for the FCRE map. More recently we were joined by Warren Roberts, who has integrated high-end GPS into the effort and developed an ArcGIS database to display the product. The specifics of this integration is described in a new publication,

Roberts, W., McFarlane, D. A. and Christenson, K. (2009) Firestone Reserve, Baru, Costa Rica, Journal of Maps, v2009, 166-169. 10.4113/jom.2009.1058. This is available on the FCRE website.

A second version of the dataset has been made available as an interactive, open-access GIS, accessible at: <http://mapserver.libraries.claremont.edu/firestone/>

Darwin's Birthday

2009 marks the 200th anniversary of Charles Darwin's birth. No, Darwin never visited Costa Rica—but no doubt he would liked to have done so!



Further Information

The Reserve website, which contains more technical details, is to be found at:

<http://costarica.jsd.claremont.edu>

Information on the adjacent Hacienda Baru Reserve is at:

<http://haciendabaru.com>